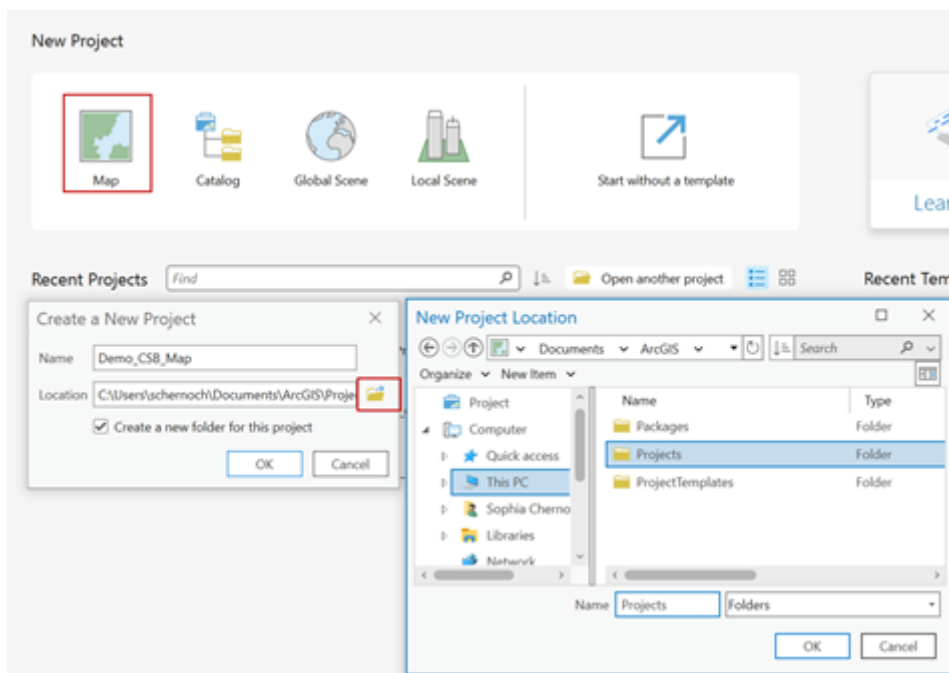


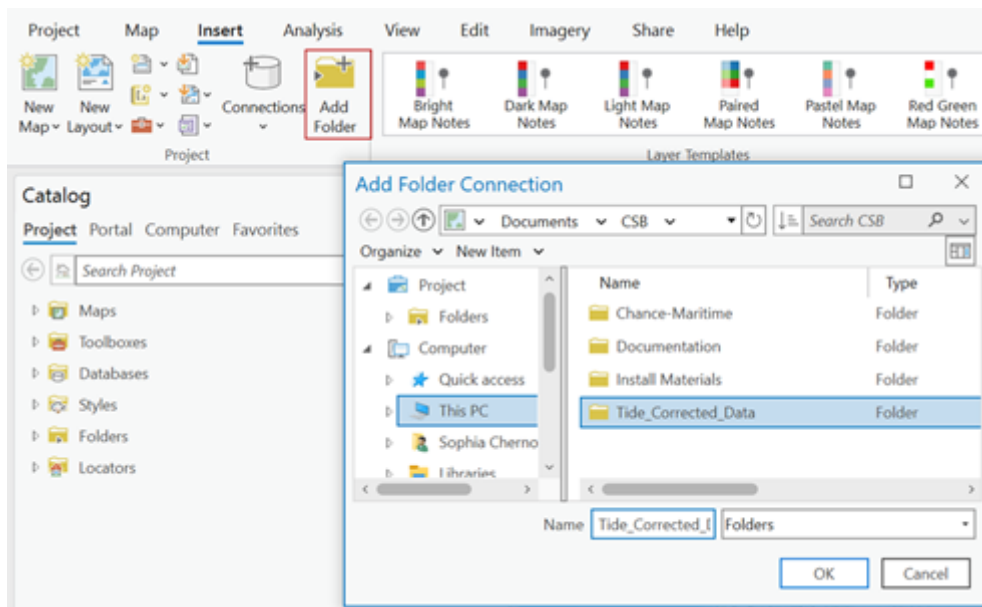
ArcGIS: Editing tide-corrected CSB data

For Trusted Nodes that have access to ESRI software licenses, tide-corrected CSB data can be edited and visualized using ArcGIS Pro.

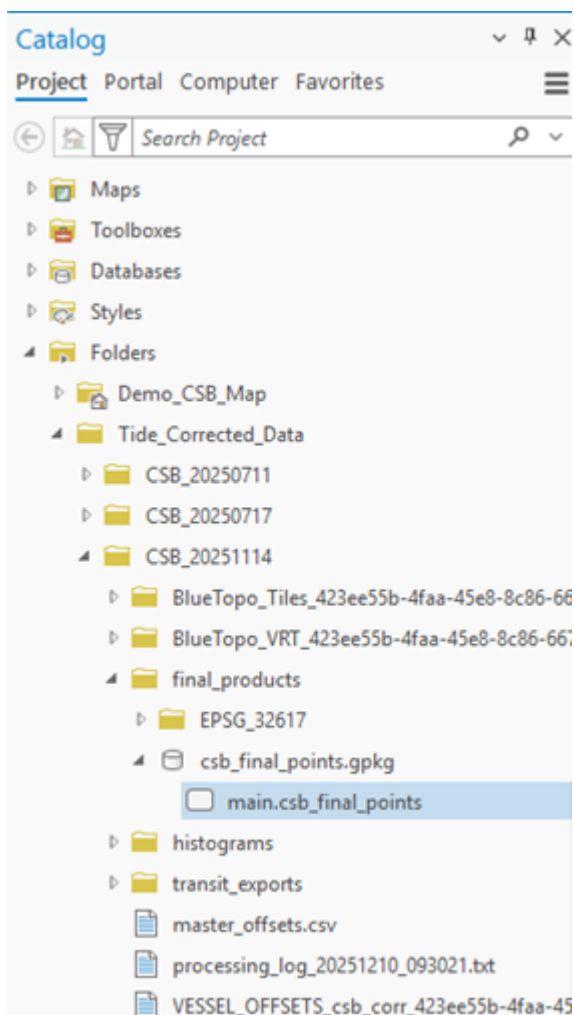
1. Launch **ArcGIS Pro** and select '**Map**' under **New Project**. Create a name and select a location to save your project.



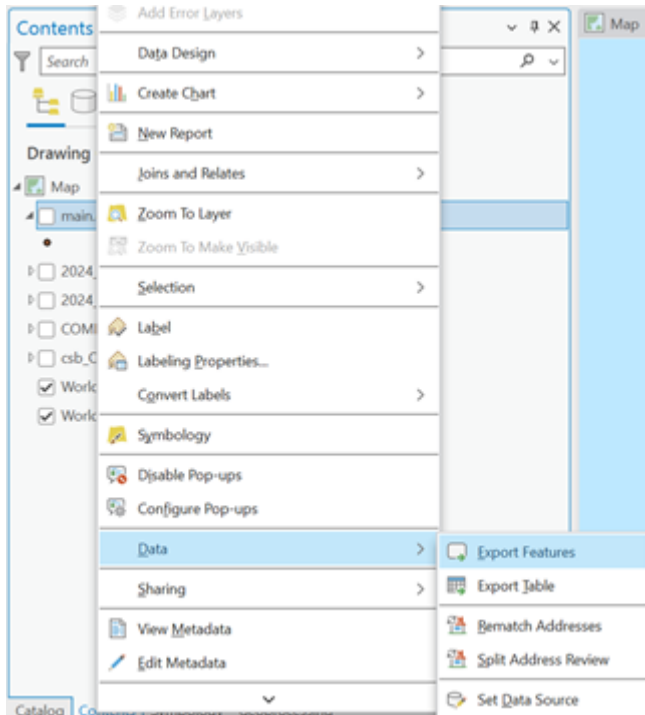
2. Under the **Insert** tab click '**Add Folder**' and select the folder where you set Pydro to output tide corrected data.



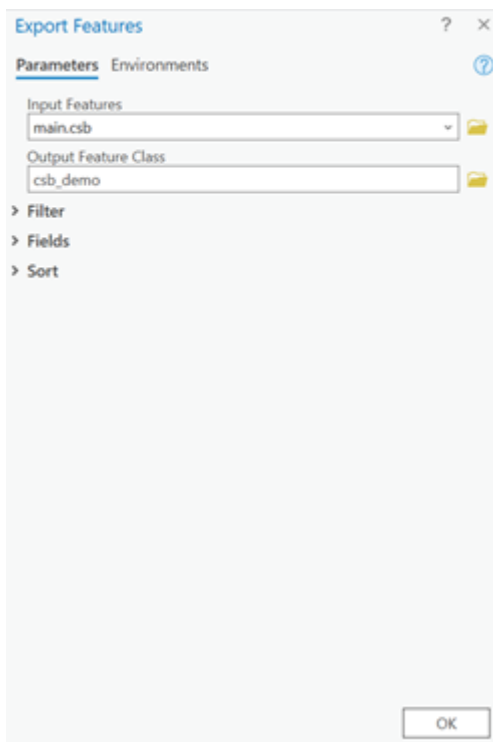
3. In the **Catalog** pane, click on the **Folders** dropdown, open the folder you just connected and locate the GeoPackage (**.gpkg**) that contains the tide corrected shapefile (**main.csb_final_points**). *Click and drag* the **main.csb_final_points** file over the base map to add it as a map layer.



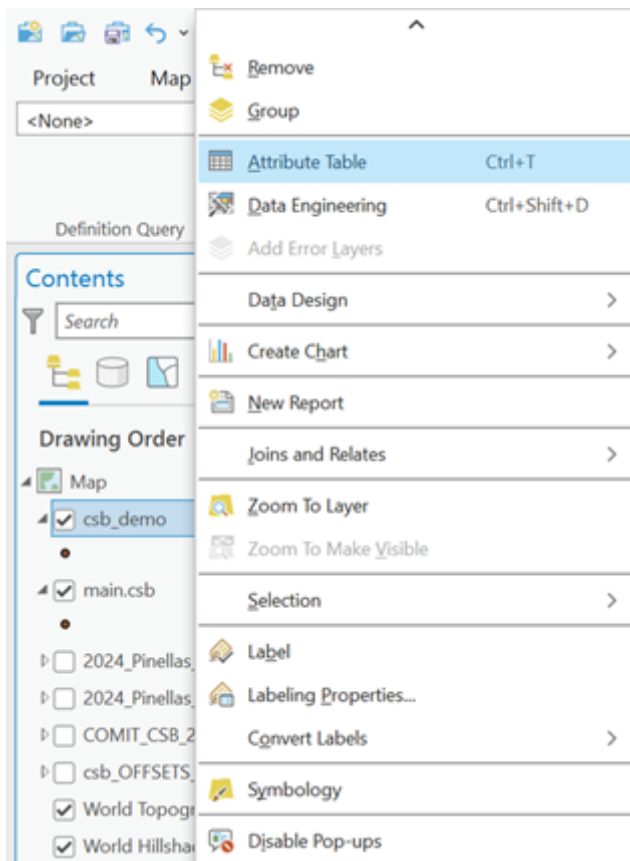
- In the **Contents** pane, *right click* on the **main.csb_final_points** layer, click on the **Data** dropdown menu and select '**Export Features**.'



- When the **Export Features** box appears, enter an appropriate name for the **Output Feature Class**, and click '**OK**'.



- In the **Contents** pane, *right click* on the feature layer you just created and click on '**Attribute Table**'.



- The attribute table should contain the following columns: **lat**, **lon**, **depth**, **time**, and **platform_name**.

OBJECTID	Shape	lon	lat	time	platform_name_x	provider	depthfinal
1	Point	-82.68297	27.713537	20240419 17:49:56	COMIT 2	COMIT USF	-1.082071
2	Point	-82.68297	27.713537	20240419 17:49:58	COMIT 2	COMIT USF	-1.092071
3	Point	-82.68297	27.71354	20240419 17:49:59	COMIT 2	COMIT USF	-1.044731
4	Point	-82.68297	27.71354	20240419 17:50:00	COMIT 2	COMIT USF	-1.064731
5	Point	-82.68297	27.71354	20240419 17:50:01	COMIT 2	COMIT USF	-1.224731
6	Point	-82.68297	27.71354	20240419 17:50:02	COMIT 2	COMIT USF	-1.054731

You are now ready to generate shapefiles of CSB data to share with participants.

Revision #9

Created 2026-01-14 22:02:41 UTC by Sophie Chernoch

Updated 2026-02-04 23:19:33 UTC by Sophie Chernoch